

Primary Tech-Enhanced Care (PTEC)

Do you have high blood pressure?

Sign up for our PTEC Home Blood Pressure Monitoring Programme!



CONVENIENT

Take your blood pressure (BP) at home, share readings automatically with your care team via a phone app, and reduce doctor visits if your BP is controlled



BETTER CONTROL YOUR BP

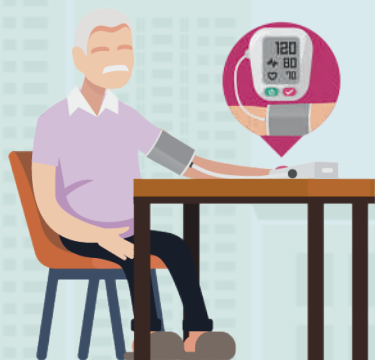
Track and manage your own condition better. The app's chatbot will also guide you to recognise symptoms of high/low blood pressure



ENJOY GREATER SUPPORT

Your care team will monitor your blood pressure and advise you in between your visits

This programme comes with a subsidised BP machine and a phone app subscription.



Ask your doctor or nurse about PTEC. Scan the QR code for more information or visit

<https://for.sg/bpmonitoring>



YOUR CARE JOURNEY

1

TELE-MONITORING



POLYCLINIC



Singapore Citizens and PRs enjoy a subsidised price of **\$6.30** per year for subscription to the Health Discovery+ app on your phone, and **\$7.50** for a Bluetooth-enabled BP machine*.

Take your BP at least once a week with the BP machine.

Your reading will be sent to your care team through the Health Discovery+ app.

Abnormal readings are flagged to the care team.

2

TELE-SUPPORT



If required, your care team will give you further guidance via tele-consultations.

The app will advise what you should do if your BP reading is not within the desired range.

You will receive a reminder if you miss taking your BP.

3

TELE-TREATMENT



Please follow the medication and lifestyle advice given by your care team during the clinic/phone consultation.

You will also receive encouragement and tips to improve your BP.

Now you can manage your BP more effectively!

**Your usual consultation, medication and lab tests will be charged separately from the PTEC Programme. Other terms and conditions apply. Please speak to your care team for more details.*



**Around half of
PTEC patients
show improved
control of their
blood pressure
after six months.**

Join the PTEC programme!

National Healthcare Group Polyclinics	6355 3000
National University Polyclinics	6908 2222
SingHealth Polyclinics	6643 6969

Brought to you by:



Supported by:



All information is correct as of February 2025.

Ver 2.1_English