



**Around half of PTEC patients show improved control of their blood pressure after six months.**

**Join the PTEC programme!**

National Healthcare Group Polyclinics	6355 3000
National University Polyclinics	6908 2222
SingHealth Polyclinics	6643 6969

**Brought to you by:**



**Supported by:**



*IMPORTANT: This programme is not to be used in medical emergencies and does not support emergency calls. If you feel unwell, do seek medical assistance at the nearest facility. If you require an ambulance, please call 995 for emergencies or 1777 for non-emergency assistance.*

All information is correct as of July 2023. We reserve the rights to amend the information from time to time as necessary. For the latest information and medical advice, please approach your care team.

Ver 2.0\_English

**Primary Tech-Enhanced Care (PTEC)**

**Do you have high blood pressure?**

**Sign up for our PTEC Home Blood Pressure Monitoring Programme!**

**CONVENIENT**



Take your blood pressure (BP) at home, share readings automatically with your care team via a phone app, and reduce doctor visits if your BP is controlled

**BETTER CONTROL YOUR BP**



Track and manage your own condition better. The app's chatbot will also guide you to recognise symptoms of high/low blood pressure

**ENJOY GREATER SUPPORT**



Your care team will monitor your blood pressure and advise you in between your visits

**This programme comes with a subsidised BP machine and a phone app subscription.**



**Ask your doctor or nurse about PTEC. Scan the QR code for more information or visit**

<https://for.sg/bpmonitoring>



# YOUR CARE JOURNEY

1

## TELE-MONITORING



## POLYCLINIC



Singapore Citizens and PRs enjoy a subsidised price of **\$6.30** per year for subscription to the Health Discovery+ app on your phone, and **\$7.50** for a Bluetooth-enabled BP machine\*.

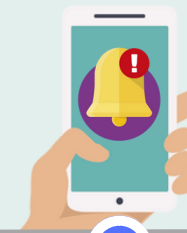
Take your BP at least once a week with the BP machine.

Your reading will be sent to your care team through the Health Discovery+ app.

Abnormal readings are flagged to the care team.

2

## TELE-SUPPORT



If required, your care team will give you further guidance via tele-consultations.

The app will advise what you should do if your BP reading is not within the desired range.

You will receive a reminder if you miss taking your BP.

3

## TELE-TREATMENT



Please follow the medication and lifestyle advice given by your care team during the clinic/phone consultation.

You will also receive encouragement and tips to improve your BP.

Now you can manage your BP more effectively!

*\*Your usual consultation, medication and lab tests will be charged separately from the PTEC Programme. Other terms and conditions apply. Please speak to your care team for more details.*